

USER'S GUIDE

Gestión de CATSettings

Version 2.0.0

**Manage User and Reference CATSettings for a
determined
CATIA “shortcut icon”**

Author: **El_Juanri**

Contributors:

Fernando Petre (Ferdo)

M^a. Angeles Tosquella

Date: 8-02-2010

Review: 16-03-2010

INDICE

1.	Reasons why to create this program.....	3
2.	Objectives.....	3
3.	What the program can do.	3
4.	Content.	4
5.	Operating systems.	4
6.	Language.	4
7.	How to use it and relations between variables.	5
8.	Operating the program.....	5
8.1.	Common steps to manage CATSettings.....	5
8.2.	Obtaining the information about your CATSettings.....	6
8.3.	Open the environment file.	6
8.4.	Delete all CATSettings for a specific icon.	7
8.5.	Open the CATSettings folder to manage them manually.	7
8.6.	Selecting the CATSettings files which we want to keep.	8
8.7.	Obtaining a backup copy.	9
8.8.	Restore a backup copy.....	10
9.	Exit from the program.	11
10.	Problems which may occurred.	11
11.	Responsibilities.....	11
12.	Credits and Copyrights.....	11

1. Reasons why to create this program

A problem which appears for many “beginners” users is to know where are the **CATSettings** in order to delete them when problems appear (like losing of the specification tree, losing icons, rarely occur errors, etc...). If they will try to find their CATSettings it will be a little bit difficult due to different kind of installations on different computers

Among other things if they will go to the directory “environment” CATEnv (Environment: variable **-direnv**) and if they will open the environment file – which is a txt file (named before **environment**) (Variable: **-env**) - they can see a text like this:

CATUserSettingPath=CSIDL_APPDATA\DassaultSystemes\CATSettings

And that “begins to be complicated”....This folder is “normally” “hidden” by Windows configuration and we need to know where it is.

Version 2 covers the case of those users working for another company and which receive some **Reference** CATSettings having to install them and do not know how or where.

As we all know the **Reference** CATSettings are those ones which are “locked” in **Options** to prevent users from change them.



2. Objectives.

This program, through a command, “**translates**” these “**system variables**” in legible directory, like this:

CATUserSettingPath=C:\Documents and Settings\Usuario\Application Data\DassaultSystemes\CATSettings



And you already understand all ...

3. What the program can do.

With this program we can know the following:

- If we have or not **Reference** CATSettings just with a simple drag and drop.
- **Know where you’re CATSetings** by drag and drop your shortcut icon thru the panel. The information is found in the box “**Dir.CATSetting → Users**”.

In this version there are following possibilities, both for **Reference** CATSettings and also for the **User**.

- Open the environment file for consultation and or modify it:  **Abrir el fichero de Entorno** (**Recommended only for experts**)
- Delete directly all CATSettings: pushing the button [**Delete all**]
- Opening directly the folder where your CATSettings are stored: clicking on icon .
- Select what CATSettings we wish to save: using buttons [**Select files to keep**] and [**Delete no keep**].
- We can make a backup copy: by pressing the button [**BackUp CATSett.**]
- We can restore a backup copy: by pressing the button [**Res. CATSettings**].
- **Insert a copy of new Reference CATSettings:** Button [**Res.CATSettings**] and options "**Reference**" and "**Create new**" activated.

4. Content.

For a correct use of this program, you need to have in the same folder with the exe file:

- A file “GestionarCATSettings.in”.
- A file “original.xls”.
- A file “Gestionar_CATSettings.pdf”.
- A file “Gestionar_CATSettings-Ing.pdf”.

The first time you run the program it will create and save a folder: “c:\Users\User\AppData\Local\GestionCATSettingsV2”, from where you save and manage your backups.

5. Operating systems.

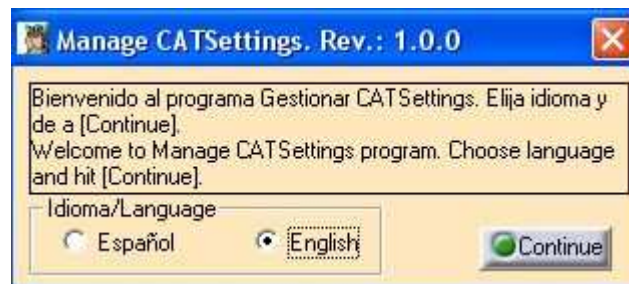
This program was tested on:

- Windows 2000.
- Windows XP (32 y 64 bits)
- Windows 7. There is a specific button to open folders in Windows 7.

Currently this version is not working in Windows Vista and Windows 10.

6. Language.

When the program is launched, a welcome screen will appear where we can choose in which language we want to see buttons and messages:



Once you hit the button [**Continue**], the main panel of the program will show. You can change the language in this panel also by clicking on the what flag you want. In the same time, the help file which you are reading now is launched



Next time when you will use this program will not show this panel because the program creates a file “[Lenguaje.txt](#)” in the “[C:\GestCATSettings\User](#)” folder in order to save the last selected language. This file will be updated if we change the buttons flag.

7. How to use it and relations between variables.

For a correct functioning of this program, is necessary to have **CATIA V5** (corresponding with the [shortcut icon](#) - file type [.lnk](#)) to be closed. If is not, some options will be resaved, which will require a new execution of the program [GestionarCATSettings.exe](#), in order to have last [CATSettings](#). This program can be used only for **CATIA v5**, which is launched with a shortcut icon.

This program doesn't need a **CATIA** license, just his own license file, which is implicit delivered with the program and in case of expiring you have to contact [Juanri](#).

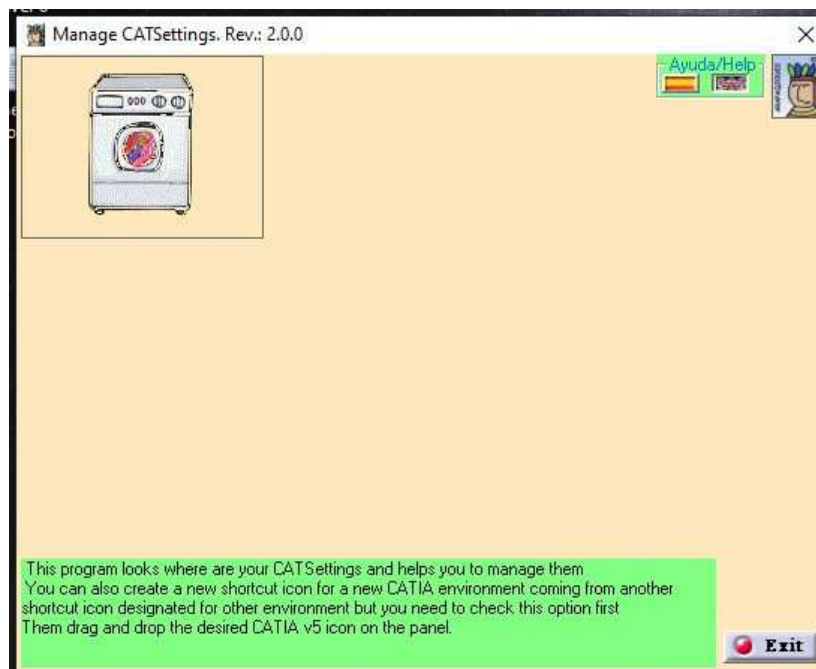
8. Operating the program.

The program has different utilities.

Let's see the steps:

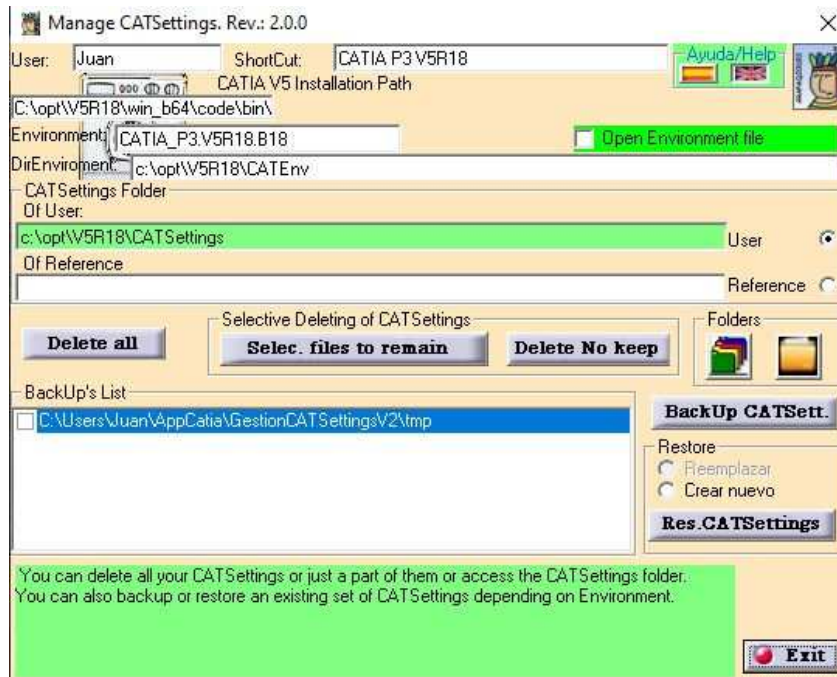
This process is "automatic" by follow the program to the various text boxes and making it easier to select the necessary directories. Consider the steps:

A panel with a “[washing machine](#)” will appear 😊



8.1. Common steps to manage CATSettings.

Step 1. - We need only to “[Drag and Drop](#)” the CATIA V5 shortcut icon of which we want to delete or manage the CATSettings thru the panel. When the operation is finished a panel like this bellow will be shown:



What we see it will give us information about:

User: The user who has logon.

Direct access: Name of the icon (shortcut) that has been dragged and dropped on the panel.

CATIA V5 installation path: the folder where CATIA is installed in our computer.

Environment: The file which contains the variables for CATIA in order to know how it will launch CATIA and other things. The file has extension **.txt**

DirEnvironment: The folder where the above file is stored.

Direc. CATSettings: The folder where you can find the CATSettings

- From **User**: These are CATSettings generated as users or by CATIA v5 as default.
- From **Reference**: These are generated as Administrator of CATIA and some others which must be locked. This field can be empty.

"List of Backup's" box: we will have all the folders in **"c:\Users\User\AppData\Local\GestionCATSettingsV2"**. It is supposed to have the names of the **"Shortcuts"** CATIA v5 program we have done the backup.

If you do not have any, will be empty, of course.

In this version we have two possible folders: one for **Users** and those of **Reference**. For any operation that follow, we must consider that option (**User or Reference**) is selected.

Depending on what we want to do we have to follow few steps.

8.2. Obtaining the information about your CATSettings

Step 2. Simply we can leave it like that and with **the information** from **"Dir. CATSettings"** box, we can copy **CATSettings** to another **folder** to create a backup

8.3. Open the environment file.

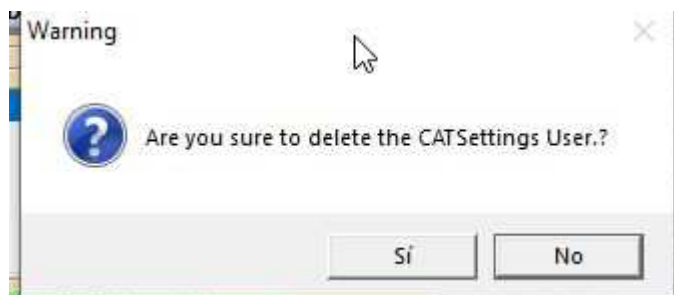
Step 2.- Select the **"Open Environment file"** and edit with the text editor which is defined by default in your computer.

This option should disable it once we have closed the editor and not before. It is only recommended for experienced users, since an error in the content of the file can lead to CATIA v5 not start with that icon.

8.4. Delete all CATSettings for a specific icon.

Step 3.- We can delete **all** CATSettings when we push the button [**Delete all**].

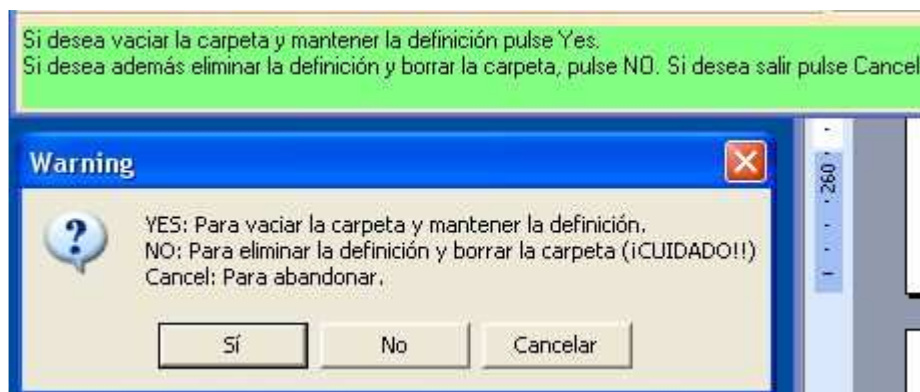
For both options, “**User**” and “**Reference**”, the system asks us if we are sure about this action. Again, if that folder has other sub-folders, we will have this message:



Allowing us to maintain the sub-folder, for example, “**Printers**”.

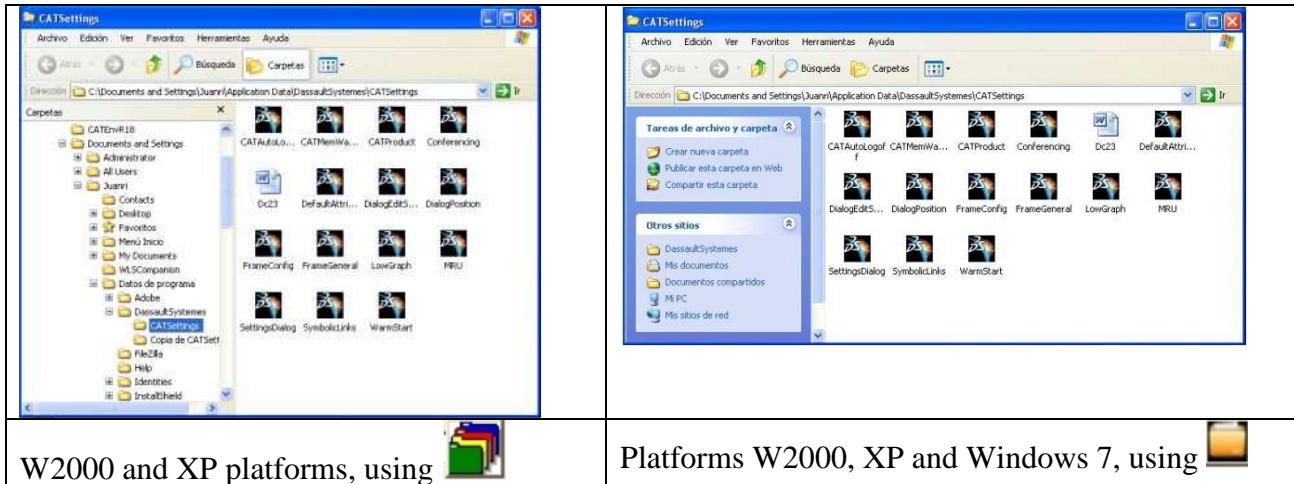
Even we already erased CATSettings restarting CATIA v5 will put the default CATSettings user.

In the case of Reference CATSettings, the program also delete the directory we asks if we remove the value of the variable “**CATReferenceSettingPath**” of the environment and leave it blank (Answer **No**) or simply empty the folder and keep the definition (Answer **Yes**). BEWARE that in this case CATIA v5 **cannot generate** them again.



8.5. Open the CATSettings folder to manage them manually.

Step 2. –In this case, hit the button  "**Open Folder**" and this will show us the selected CATSettings content folder. This button functions in **Windows 2000 and XP** platforms, but not on **Windows 7**, for which will use the button 



8.6. Selecting the CATSettings files which we want to keep.

In this case, the process will need two steps more:

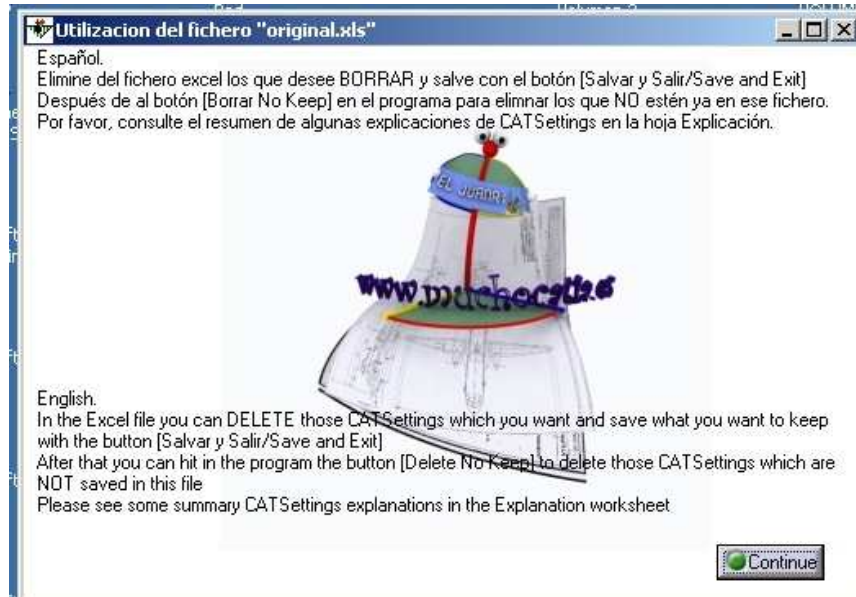
- Generate an [Excel](#) file with the names of the CATSettings files existing in your folder (subfolders are excluded). After this step is finished, we save the file with the compulsory name “[To_Keep.xls](#)” for the case of the User and “[To_Keep-Ref.xls](#)” for the case of Reference CATSettings . In this file, there are described some files, and you can decide what to keep or not by deleting file names, but keeping the Excel format. WARNING! Do not leave blank characters before or after the name of the file.
- The program can keep the files included in Excel file and can delete the others which are **not included in Excel file**.



However, if we always leave the same files, once defined these in the file "[To_Keep.xls](#)" is not necessary step 3 which is explained bellow.

Step 2 – To generate Excel file, we can hit the button [[Select files to remain](#)] and an [Excel](#) file, copy of “[original.xls](#)”, will appear this file contain a list of CATSettings file names with some explanation for what they serve and will be completed with what our folder contains.

The program automatically adds the missing ones and removes that we do not have in our directory. When we hit the button, a message will appear



This is the aspect of the file.

	A	B	C	D	E
	Ficheros a mantener /Files to keep			Conviene Borrar/Delete them	Conviene Mantener/Keep them
1	Salvar y Salir /Save and Exit	Colorear en verde/Color Selection	Ayuda / Help		
2	Nombre Fichero/File name	Utilidad	Utilite		
3	FrameConfig.CATSettings	Configuracion de las barras	Frame Configuration		
4	FrameGeneral.CATSettings	Configuracion de las barras	Frame General Configuration		
5	DLNames.CATSettings	Definicion de DLNames	DLNames definition		
6	SymbolicLinks.CATSettings	Configuracion de links (Options>General>Document)	Links Configuration (Options>General>Document)		
7	Part.CATSettings	Opciones de Part (Options>Infrastructure>Part Infrastructure):	Part Options (Options>Infrastructure>Part Infrastructure):		
8	PartDocument.CATSettings	Opciones de Part (Options>Infrastructure>Part Infrastructure):	Part Options (Options>Infrastructure>Part Infrastructure):		
9	CATIAV5Cache.CATSettings	Options > Infrastructure/ Cache Management	Options > Infrastructure/ Cache Management		
10	4DNavigator.CATSettings				
11	CATAutoLogoff.CATSettings				
12	CATMemWarning.CATSettings				
13	CATStatistics.CATSettings				
14	Conferencing.CATSettings				
15	DocEnv.CATSettings				
16	DocView.CATSettings				
17	GeneralPerformances.CATSettings				
18	LowGraph.CATSettings				
19	Scripting.CATSettings				
20	SelectSettings.CATSettings				
21	SettingsDialog.CATSettings				
22	VisualizationRepository.CATSettings				

Step 3. - In this case, we just have to eliminate those **complete lines** who we wish to **delete**.. When finished, hit the button [**Save and Exit / Salvar y Salir**] to save the file in the folder “c:\Users\User\AppCatia\GestionCATSettingsV2” with the name “**To_Keep.xls**” (mandatory) if the option selected was for the “User” or . “**To_Keep-Ref.xls**” if the option selected was for the “**Reference**”. If the file is existing, we can overwrite by pushing **Yes**.

Step 4. - To be effective this selective deletion, we now push the button [**Delete no keep**]

8.7. Obtaining a backup copy.

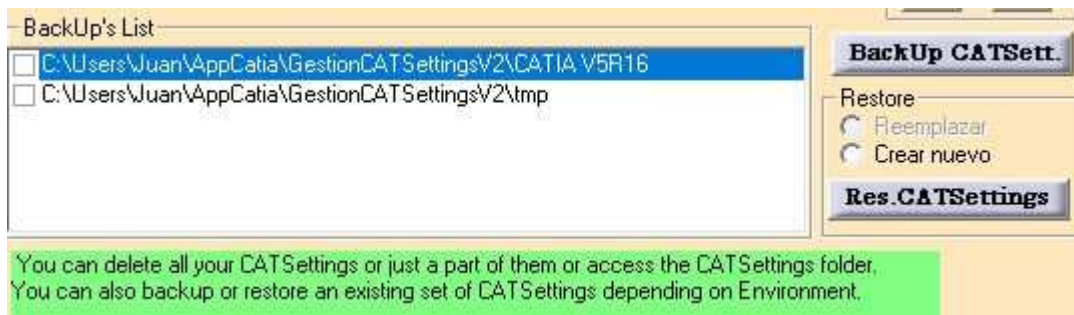
Step 2 If we want to get a backup copy, just push the button [**BackUp CATSett.**] and a copy of all files, including subfolders will be saved in “c:\Users\User\AppCatia\GestionCATSettingsV2in a folder with the name identically with the shortcut name. This will help users which shares same computer to know which their CATSettings for different environments are.

In the case of Reference, the program will save with the same name as the “shortcut” but followed by “-Reference” to distinguish them.

Remember you can always save the file in another location, but the program will "drive" you to the User folder.

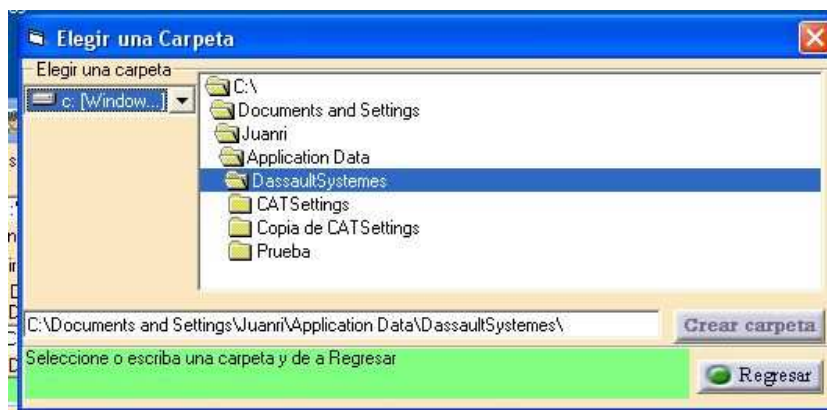
8.8. Restore a backup copy.

Step 2.- If we want to recover a complete directory of CATSettings, select it from the list and hit the button [**Res.CATSettings**]. In the list you can find all backup's for the **logon user**.



You can choose:

- If you replace the folder contained in the text box "user" (User CATSettings) in which case we have to select “User” and “Replace”.
- If the directory is Reference, select the “Reference” and may occur: The “environment” has no currently **Reference CATSettings**, in which case we choose the folder where you save it and consequently to activate the option “Create New”. Now we will see this box:



The folder you choose must be different from the root "C: \", but can be either below or on another unit. This is to **prevent deletion of files and folders** required for PC operation.

If we do not have the folder created, we can create with the program by typing its name after the path we want and then push the button [**Create Folder**]. Once created and /or selected the folder where you want to place the **Reference CATSettings**, we push [**Back**] to return to the main panel.

- For the “environment” which already has **Reference CATSettings**, we select the option “**Replace**”

Push the button [[Res CATSettings](#)]. The list provides all the backup folders of the user which is logged on.

The “[Create New](#)” option applies ONLY to that Reference, modifying environment file and placed in line (which is usually empty) where it is the folder, without having to log on as [Administrator](#) of CATIA v5.

When finished, the program informs us that everything went well... I hope, of course.

9. Exit from the program.

Just hit the button [[Exit](#)].

If we do before the “[washing machine](#)” stops (30 cycles or an icon on the screen), we may have to hit that button again to exit.

10. Problems which may occurred.

When we use the button [[Select files to remain](#)], the program open an [Excel.exe](#) which will close when we exit from the program. Even if the worksheet is closed, we can see in “[Task Manager](#)” an Excel process which runs. This is possible if the user try to edit an excel file and the Excel program is not responding. To solve this issue, go to [Task Manager](#) and end the process or even easier close the program “[Gestionar_CATSettings](#)”.

11. Responsibilities

The author is not liable for any direct or indirect damages that may result from the use of this program.

12. Credits and Copyrights.

The Program is subject to the rights described in [Creative Common](#), as specified in [About](#) (By double-clicking the icon in the upper right corner).

The program is an original idea of “[El Juanri](#)” and is inspired by “[drag and drop](#)” form described in the web page “[El Guille \(Som\)](#)”: [Executing a direct access](#):

http://www.elguille.info/vb/API/ejecutar_acceso_directo.aspx

But rather than run we execute a “read”.... We must give everyone his due...

Contributors at this program for version 1:

- [Fernando Petre \(Ferdo\)](#), from Bucharest-Romania. [Thanks Fernando!!](#)
- [Javier \(Gemangi\)](#), from Barcelona-Spain. [Thanks brother!!](#)
- [Gerardo Vereda](#), from Madrid-Spain (master in programming...). [Thanks maestro!!](#)
- [M^a. Ángeles Tosquilla](#), from Cataluña in Sevilla. [Thanks my colleague!](#)

Contributors at this program for version 2:

- [Fernando Petre \(Ferdo\)](#)
- [M^a. Ángeles Tosquilla](#)